

# 2021-2022 New York City Go Red for Women® & STEM Goes Red Leadership

## Go Red for Women® Chair



**Vacant**

## Go Red for Women® Executive Leadership Team



**Sonal Bhatia, MD**  
Chief Medical Officer,  
Rare Disease  
*Pfizer*



**Rose Caiola**  
Principal Member  
*Bettina Equities Management;*  
Founder/CEO  
*Rewire Me*



**Toni Dufour**  
Chief Growth Officer  
*McCann Health*



**Joanne Dunbar, FCPA**  
Principal,  
People Advisory Services  
*EY*



**Kathleen Entwistle**  
Managing Director  
*Morgan Stanley*



**Eugenia Gianos, MD, FACC, FAHA, FASE, FNLA**  
Professor of Cardiology  
*Zucker School of Medicine;*  
System Director, Cardiovascular Prevention,  
*Katz Institute Women's Heart Program;*  
Director, Women's Heart Program,  
*Lenox Hill Hospital*



**Wendy Holmes**  
Managing Director,  
Wealth Management;  
Private Wealth Advisor  
*UBS*



**Lori Klein**  
Founder & CEO  
*Bench Wing*



**Deborah Levy**  
SVP, Talent Acquisition  
*Evoke*



**Lori Marino**  
Executive Vice President,  
General Council  
*New Senior Investment Group*



**Suzanne McAndrew**  
Global Talent Business Leader  
*Willis Towers Watson*



**Nupoor Narula, MD**  
Assistant Professor of  
Medicine, Cardiology  
*NewYork-Presbyterian/Weill Cornell Medicine*



**Beth Oliver, DNP, RN**  
Chief Nursing Executive; Senior  
Vice President,  
Cardiac Services  
*Mount Sinai Health System*



**Latricia Parker**  
Vice President,  
Global Benefits  
*Estée Lauder Companies*



**Jeanette Pieper**  
Managing Director,  
Private Wealth Solutions  
*Blackstone*



**Betty Smith**  
Vice President and Head of  
Digital Technology  
*New York Life*

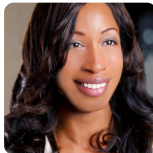
STEM Goes Red Chair



**Suzanne Steinbaum, DO, FACC, FAHA**  
Women's Cardiovascular  
Prevention, Health and Wellness  
*SRSHeart, Inc.*



**Jennifer Truscott**  
Chief of Operations  
*EmblemHealth*



**Tifphani White-King**  
Principal,  
National Tax Practice Leader  
*Mazars USA*

Women of Impact ELT Lead

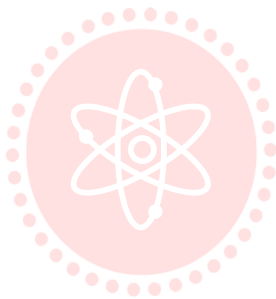


**Susan White Morrissey**  
Founder & CEO  
*White + Warren*

## STEM Goes Red Chair



**Betty Smith**  
Vice President and Head  
of Digital Technology  
*New York Life*



## STEM Goes Red Leadership Committee



**Emily Brand**  
Cheif Architect  
*Red Hat, Inc.*



**Rachel-Maria Brown Talaska, MD, FACC**  
Assistant Professor of Cardiology,  
Zucker School of Medicine at  
Hofstra/Northwell Director, Inpatient  
Cardiac Services  
*Northwell Health-Lenox Hill Hospital*



**Nancy Devore**  
Senior Director,  
Strategic Relations  
*Salesforce*



**Tahire Edirisinghe**  
Consultant  
*Virtusa Corporation*



**Jennifer Hodge, PhD**  
US DMD Lead, Medical Affairs  
*Pfizer*



**Peter Howard**  
Managing Director,  
Senior Digital  
Transformation Executive  
*Accenture Interactive*



**Christine Price**  
Vice President of Sales  
*XSell Resources, Inc.*



**Jessica Richard**  
Cheif of Staff  
*UBS*